



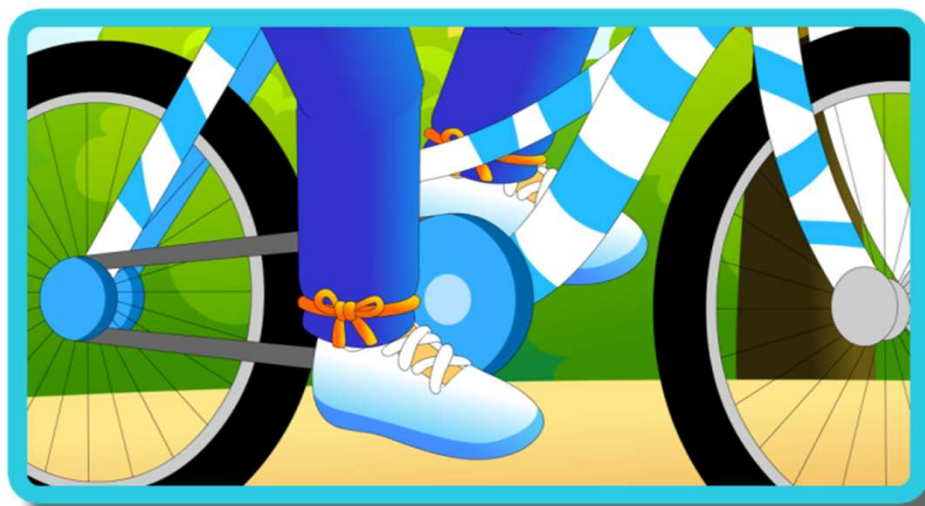
嘉義市監理站

CHIAYI MOTOR VEHICLES SERVICE STATION

衣服穿著要注意

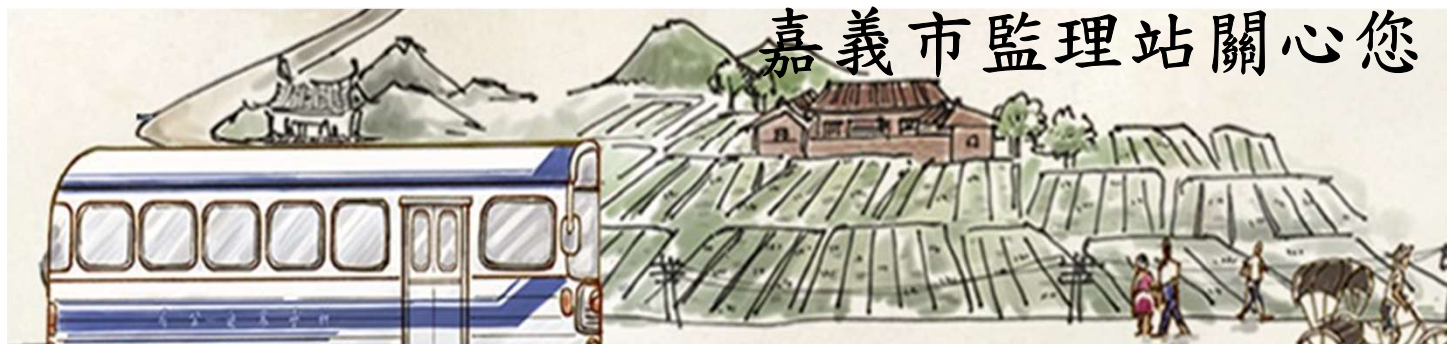


捲入或被勾到很危險



將衣物束緊

嘉義市監理站關心您





嘉義市監理站

CHIAYI MOTOR VEHICLES SERVICE STATION

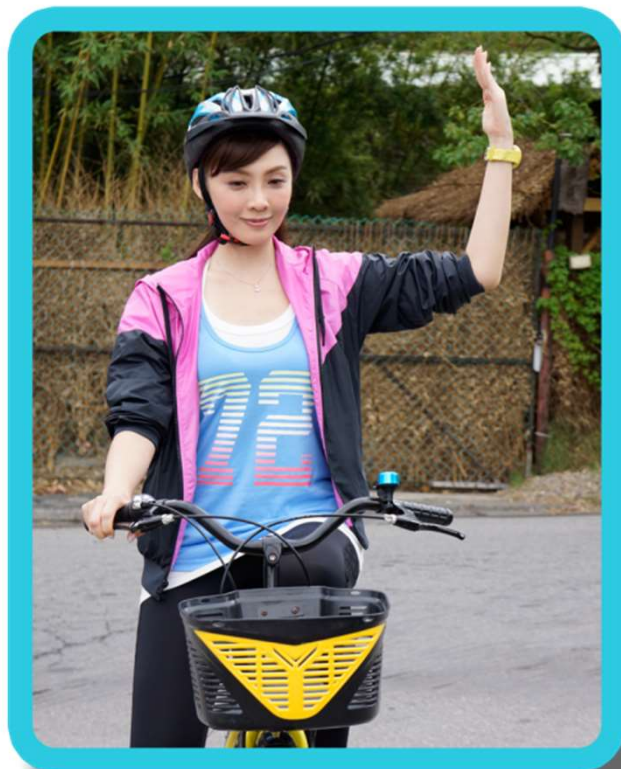
先注意安全，再打手勢



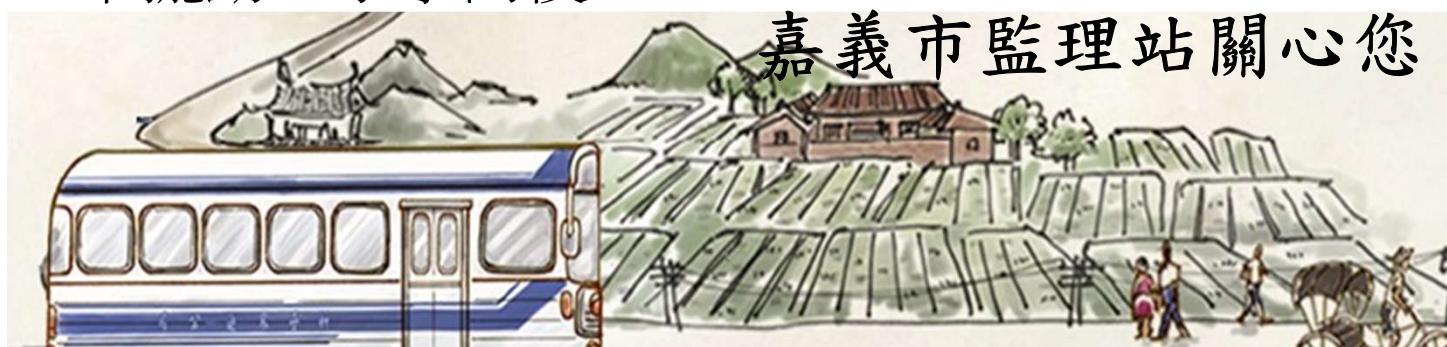
左轉：平行伸出左手，
手掌向下



減速停止：將左臂向
下擺動，手掌向後



右轉：將左臂向上垂伸



嘉義市監理站關心您



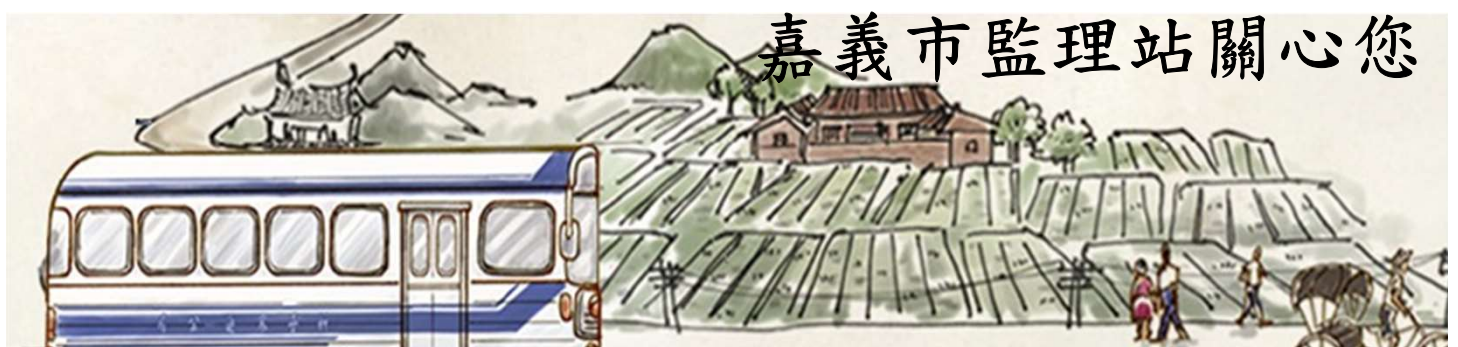
雨天該怎麼騎車自行車？



雨天騎乘
穿著色彩鮮艷的雨衣



不可以撐雨傘

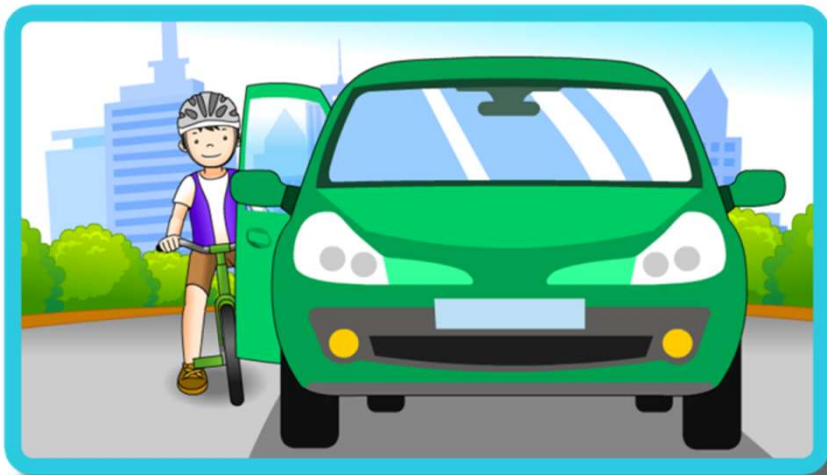




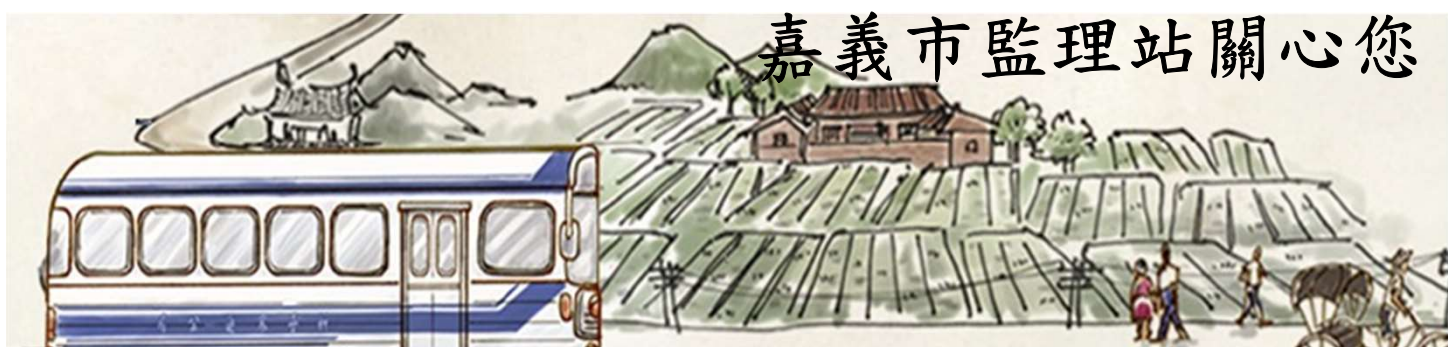
保護自身安全



變換車道時
要注意後方來車



注意路旁車輛
車門開啟





道路上的禁止行為



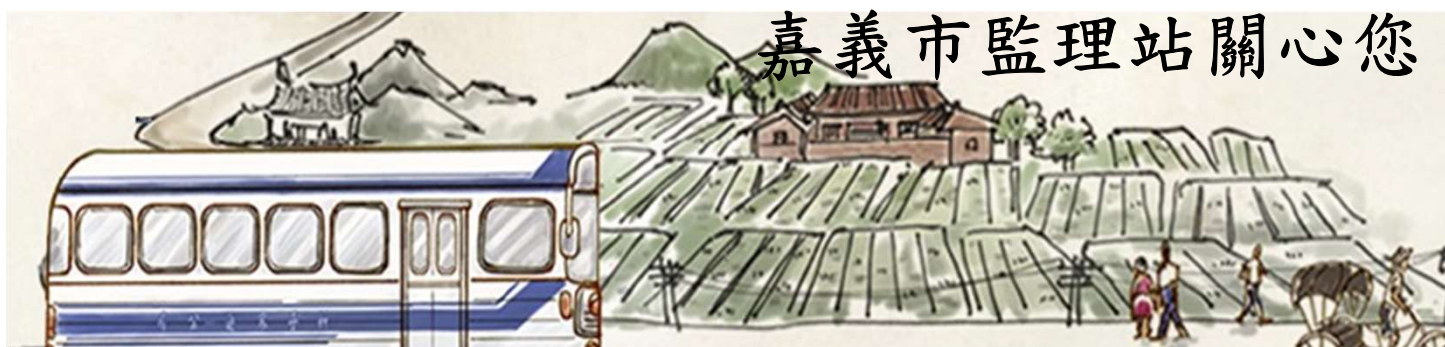
不可在路上嬉戲



不可併行騎乘



禁止後載(火箭筒)

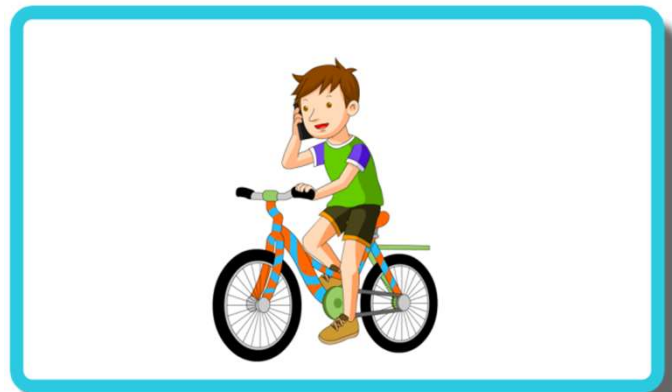




道路上的禁止行為



禁止單手或放手騎乘



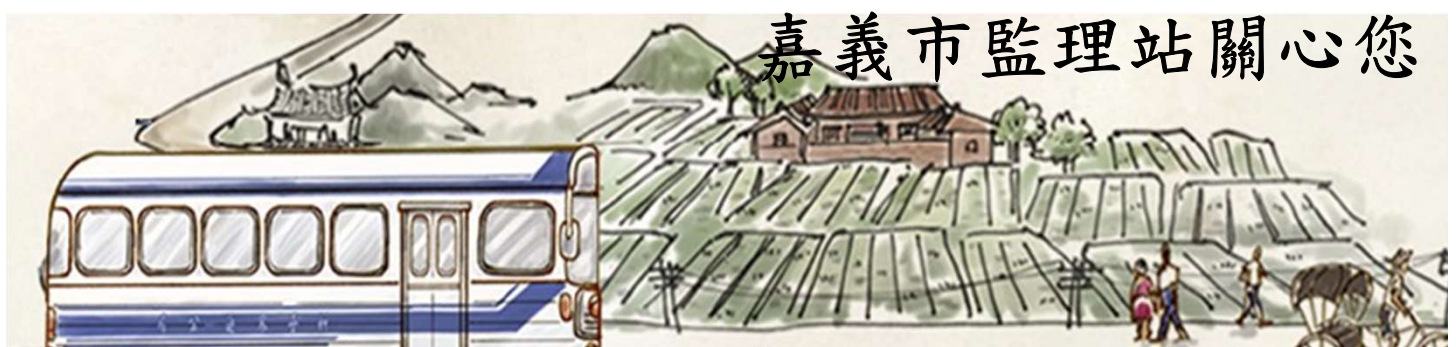
禁止騎乘時講電話



禁止競駛追逐

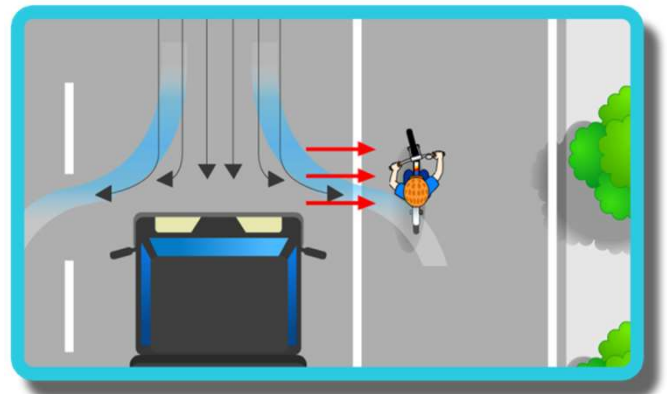
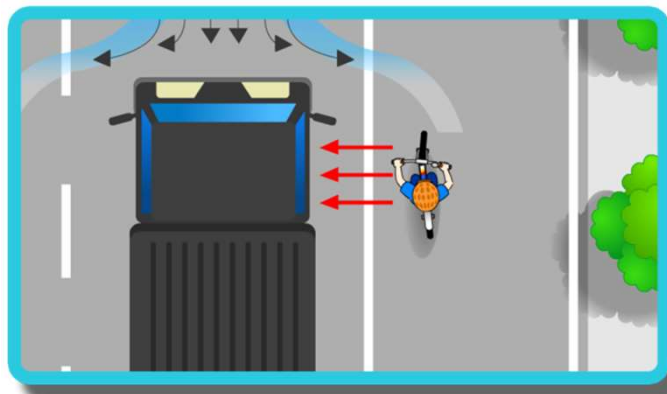


禁止依附汽車騎乘

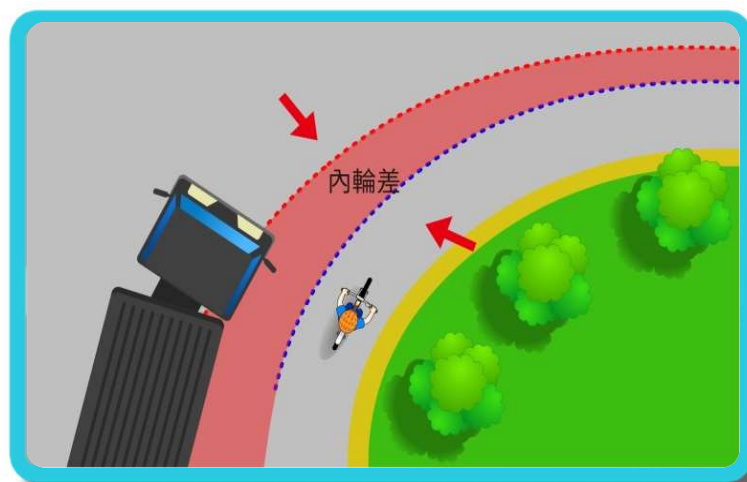




碰到大型車該怎麼辦？



注意「推、吸」作用



注意大型車轉彎時的內輪差，離大型車遠一點

